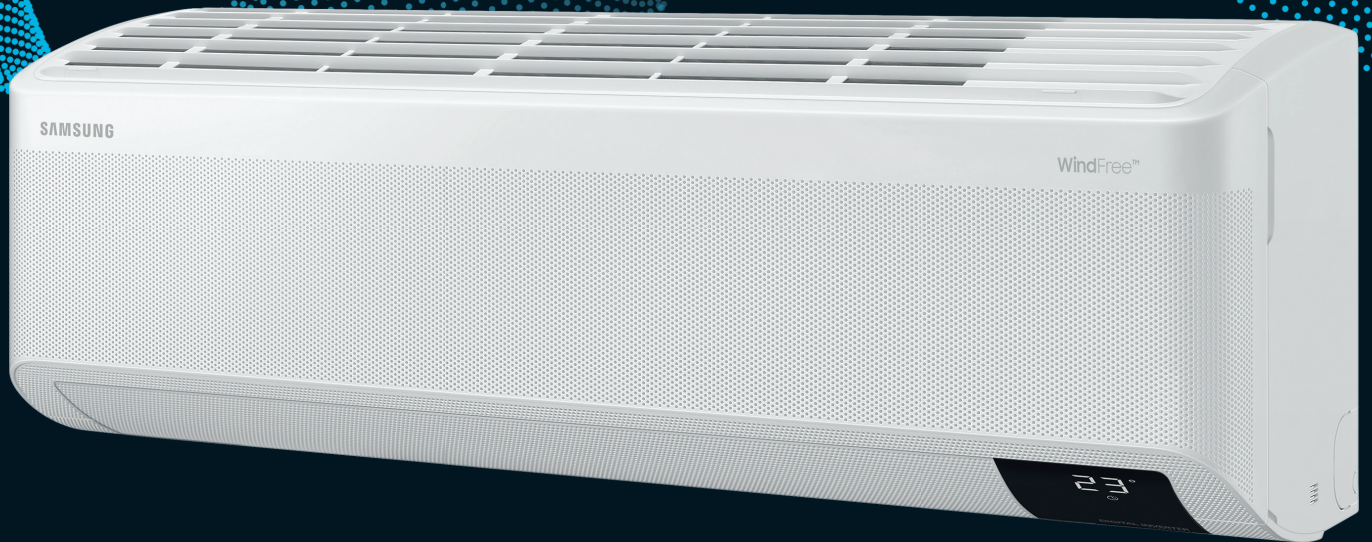


SAMSUNG
Climate Solutions



High Efficiency WindFree™ Wall Mounted

High Efficiency WindFree™ Wall Mounted

- WindFree™ Cooling mode.
- Four-way swing allows users to control the airflow direction from left to right and up or down using the remote controller.
- Equipped with Easy Filter Plus, easily accessible and washable pre-filter with dense mesh.
- Can be controlled by Smartphone via Wi-Fi Kit (Optional).

- Wide Operation Range.
- Smart Outdoor unit with inverter PBA Self-Diagnosis.
- Enhanced Performance of 100% Heating Capacity at -15°C.



Specifications

Model		Outdoor Indoor	AC026BXAPKG/EU AC026BNAPKG/EU	AC035BXAPKG/EU AC035BNAPKG/EU	AC052BXAPKG/EU AC052BNAPKG/EU	AC071BXAPKG/EU AC071BNAPKG/EU	AC071BXAPNG/EU AC071BNAPNG/EU
Electrical							
Power Supply	Outdoor	Φ, #, V, Hz	1Φ, 2, 220-240 V, 50 Hz	1Φ, 2, 220-240 V, 50 Hz	1Φ, 2, 220-240 V, 50 Hz	1Φ, 2, 220-240 V, 50 Hz	3Φ, 4, 380-415 V, 50 Hz
	Indoor	Φ, #, V, Hz	1Φ, 2, 220-240 V, 50 Hz	1Φ, 2, 220-240 V, 50 Hz	1Φ, 2, 220-240 V, 50 Hz	1Φ, 2, 220-240 V, 50 Hz	1Φ, 2, 220-240 V, 50 Hz
MCA	System (Outdoor/Indoor)	A	11.0 (10.0 / 1.0)	11.0 (10.0 / 1.0)	17.0 (16.0 / 1.0)	21.0 (20.0 / 1.0)	17.1 (16.1 / 1.0)
MFA	System	A	15.0	15.0	20.0	25.0	20.0
Minimum SSC value	Outdoor	MVA	Not Applicable	Not Applicable	Not Applicable	Not Applicable	1.4
Interconnecting Communication Cable		mm ²	Screened 0.75-1.5mm ² , 2 Core, F1 F2 Connection				
Performance¹							
Nominal Cooling Capacity	Total Cooling (Sensible Cooling)	kW	2.6 (2.0)	3.5 (2.9)	5.0 (3.9)	7.1 (5.1)	7.1 (5.1)
UK Cooling Capacity	Total Cooling (Sensible Cooling)	kW	2.9 (2.1)	3.8 (3.1)	5.1 (3.8)	7.2 (4.9)	7.2 (4.9)
Nominal Heating Capacity		kW	3.3	4.0	6.0	8.0	8.0
Operating Temperature Range	Cooling	°C	-20.0 ~ 52.0 °C	-20.0 ~ 52.0 °C	-20.0 ~ 52.0 °C	-20.0 ~ 52.0 °C	-20.0 ~ 52.0 °C
	Heating	°C	-25.0 ~ 24.0 °C	-25.0 ~ 24.0 °C	-25.0 ~ 24.0 °C	-25.0 ~ 24.0 °C	-25.0 ~ 24.0 °C
Energy Efficiency²							
Rated Efficiency	EER (Nominal Cooling)	W/W	4.00	4.07	3.94	3.26	3.26
	COP (Nominal Heating)	W/W	3.79	4.04	3.80	3.32	3.32
Seasonal Efficiency	SEER / Energy Label	W/W	7.2 / A++	7.7 / A++	7.5 / A++	7.0 / A++	7.0 / A++
	SCOP / Energy Label	W/W	4.3 / A+	4.6 / A++	4.6 / A++	4.3 / A+	4.3 / A+
Air Flow Rate							
Indoor Unit Airflow Rate	H/M/L	l/s	177 / 142 / 115	212 / 168 / 133	253 / 210 / 177	297 / 253 / 220	297 / 253 / 220
Outdoor Unit Airflow Rate		l/s	667	667	917	1,200	1,200
Piping Connections							
Liquid Pipe		ø, mm (inch)	6.35 (1/4)	6.35 (1/4)	6.35 (1/4)	9.52 (3/8)	9.52 (3/8)
Gas Pipe		ø, mm (inch)	9.52 (3/8)	9.52 (3/8)	12.7 (1/2)	15.88 (5/8)	15.88 (5/8)
Drain Pipe		ø, mm	ID 18 Hose	ID 18 Hose	ID 18 Hose	ID 18 Hose	ID 18 Hose
Max Piping Length (Height)		m	30 (20)	30 (20)	50 (30)	55 (30)	55 (30)
Refrigerant							
Type			R32 (Fluorinated greenhouse gas, GWP=675)				
Factory Charging		kg	1.2	1.2	1.7	2.7	2.7
		tCO _{2e}	0.81	0.81	1.15	1.82	1.82
Precharge to		m	20	20	20	30	30
Additional Charge		g/m	30	30	30	45	45
Sound							
Indoor Sound Pressure Level	H/M/L	dB(A)	37 / 31 / 25	41 / 35 / 29	42 / 37 / 32	45 / 40 / 36	45 / 40 / 36
Indoor Sound Power Level		dB(A)	56	58	58	61	61
Outdoor Sound Pressure Level	Cooling / Heating	dB(A)	45 / 45	46 / 46	47 / 48	47 / 49	47 / 49
Outdoor Sound Power Level		dB(A)	59	61	63	64	64
Dimensions							
Net Weight	Indoor Unit/Outdoor Unit	kg	10.6 / 43.0	10.6 / 43.0	12.7 / 50.0	12.7 / 75.0	12.7 / 74.0
Indoor Unit Net Dimensions	W x H x D	mm	820 x 299 x 215	820 x 299 x 215	1,055 x 299 x 215	1,055 x 299 x 215	1,055 x 299 x 215
Outdoor Unit Net Dimensions	W x H x D	mm	880 x 638 x 310	880 x 638 x 310	880 x 798 x 310	940 x 998 x 330	940 x 998 x 330

Accessories

Wireless Remote Controller	Touch Wired Controller	Premium Wired Controller	Wi-Fi Kit	External Room Sensor
AR-EH04E	MWR-SH11N	MWR-WG00JN	MIM-H04EN	MRW-TA

¹ Performances are based on the following design conditions:

- Nominal Cooling Capacity: Indoor temperature 27°C DB, 19°C WB, Outdoor temperature 35°C DB
 - Nominal Heating Capacity: Indoor temperature 20°C DB, Outdoor temperature 7°C DB, 6°C WB
 - UK Cooling Capacity: Indoor temperature 23°C DB, 16°C WB, Outdoor temperature 30°C DB

² For units with capacity up to 12kW: Efficiencies as shown are according to EU No 206/2012 (LOT10) Ecodesign requirements for air conditioners.

For units with capacity up to 12kW: Energy labels as shown are according to EU No 626/2011 (LOT10) Label classification 2019, on a scale from D to A+++.

For units with capacity greater than 12kW: Efficiencies as shown are according to EU No 2016/2281 (LOT11) Ecodesign requirements for heat pumps/air conditioners.

High Efficiency WindFree™ Wall Mounted

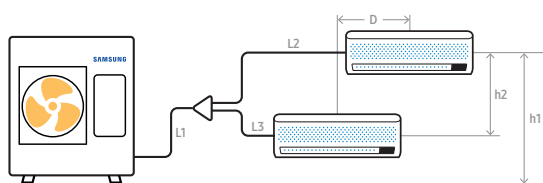
Multi-Unit Operation (DPM)

Instead of connecting just one indoor unit, users can connect two, three or four indoor units with a single outdoor unit for more efficient cooling and heating. The indoor units operate and are controlled simultaneously as one cycle within the same mode via one remote controller. This system is ideal for spaces requiring multiple indoor units for better temperature and airflow distribution, such as open plan offices or shops.

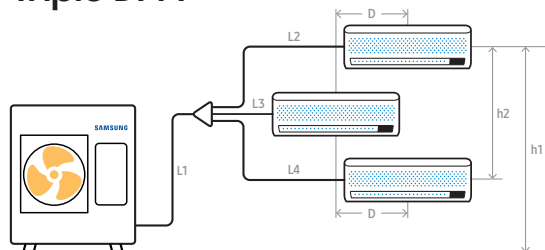
Model			7kW Twin DPM Single Phase	7kW Twin DPM Three Phase	10kW Twin DPM Single Phase	10kW Twin DPM Three Phase	10kW Triple DPM Single Phase
System Composition							
Outdoor Unit			AC071BXAPKG/EU	AC071BXAPNG/EU	AC100BXAPKG/EU	AC100BXAPNG/EU	AC100BXAPKG/EU
Indoor Unit			AC035BNAPKG/EU X2	AC035BNAPKG/EU X2	AC052BNAPKG/EU X2	AC052BNAPKG/EU X2	AC035BNAPKG/EU X3
Branch Pipe Kit			MXJ-2D2509K	MXJ-2D2509K	MXJ-2D2509K	MXJ-2D2509K	MXJ-3D2509K
Outdoor Unit Details							
Power Supply	Φ, #, V, Hz		1Φ, 2, 220–240 V, 50 Hz	3Φ, 4, 380–415 V, 50 Hz	1Φ, 2, 220–240 V, 50 Hz	3Φ, 4, 380–415 V, 50 Hz	1Φ, 2, 220–240 V, 50 Hz
MCA	A		20.0 /	16.1	28.0	16.1	28.0
MFA	A		25.0	20.0	35.0	20.0	35.0
Minimum SSC value	MVA		Not Applicable	1.4	Not Applicable	1.6	Not Applicable
Airflow Rate	l/s		1,200	1,200	2,083	2,083	2,083
Sound Pressure Level	Cooling / Heating	dB(A)	47 / 49	47 / 49	47 / 50	47 / 50	47 / 50
Sound Power Level		dB(A)	64	64	66	66	66
Net Weight		kg	75.0	74.0	100.0	100.0	100.0
Net Dimensions	WxHxD	mm	940 x 998 x 330	940 x 998 x 330	940 x 1,420 x 330	940 x 1,420 x 330	940 x 1,420 x 330
Piping Connections							
Total Pipe Length (all lengths combined)		m	55	55	85	85	85
Max Main Pipe Length	L1+a+b	m	35	35	35	35	35
Max Individual Pipe Length After Branch	L2, L3, L4, L5	m	15	15	15	15	15
Max Pipe Length Difference Between Indoor Units	e.g. L2-L3, (a+L3)-(b+L5)	m	5	5	5	5	5
Max Distance Between Indoor Units	D	m	10	10	10	10	10
Max Height Between Indoors And Outdoor	h1	m	30	30	30	30	30
Max Height Difference Between Indoors	h2	m	0.5	0.5	0.5	0.5	0.5
Main Pipe (L1+a+b)	Liquid	ø, mm (inch)	9.52 (3/8)	9.52 (3/8)	9.52 (3/8)	9.52 (3/8)	9.52 (3/8)
	Gas	ø, mm (inch)	15.88 (5/8)	15.88 (5/8)	15.88 (5/8)	15.88 (5/8)	15.88 (5/8)
Individual Liquid Pipe After Branch (L2, L3, L4, L5)	Liquid	ø, mm (inch)	6.35 (1/4)	6.35 (1/4)	6.35 (1/4)	6.35 (1/4)	6.35 (1/4)
	Gas	ø, mm (inch)	9.52 (3/8)	9.52 (3/8)	12.7 (1/2)	12.7 (1/2)	9.52 (3/8)
Refrigerant*							
Type			R32 (Fluorinated greenhouse gas, GWP=675)				

* Additional refrigerant charge for DPM systems is different than single CAC, please consult the relevant installation manual

Twin DPM



Triple DPM



High Efficiency WindFree™ Wall Mounted

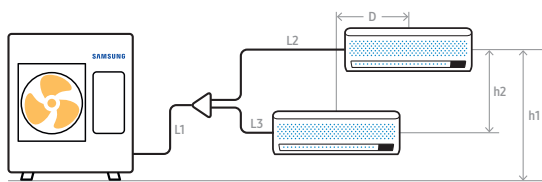
Multi-Unit Operation (DPM)

Instead of connecting just one indoor unit, users can connect two, three or four indoor units with a single outdoor unit for more efficient cooling and heating. The indoor units operate and are controlled simultaneously as one cycle within the same mode via one remote controller. This system is ideal for spaces requiring multiple indoor units for better temperature and airflow distribution, such as open plan offices or shops.

Model			10kW Triple DPM Three Phase	12kW Triple DPM Three Phase	14kW Twin DPM Three Phase	14 kW Triple DPM Single Phase
System Composition						
Outdoor Unit			AC100BXAPNG/EU	AC120BXAPNG/EU	AC140BXAPNG/EU	AC140BXAPNG/EU
Indoor Unit			AC035BNAPKG/EU X3	AC052BNAPKG/EU X3	AC071BNAPKG/EU X2	AC052BNAPKG/EU X3
Branch Pipe Kit			MXJ-3D2509K	MXJ-3D2509K	MXJ-2D2509K	MXJ-3D2509K
Outdoor Unit Details						
Power Supply	Φ, #, V, Hz		3Φ, 4, 380–415 V, 50 Hz	3Φ, 4, 380–415 V, 50 Hz	3Φ, 4, 380–415 V, 50 Hz	1Φ, 2, 220–240 V, 50 Hz
MCA	A		16.1	16.1	16.1	16.1
MFA	A		20.0	20.0	20.0	20.0
Minimum SSC value	MVA		1.6	1.6	1.6	1.6
Airflow Rate	l/s		2,083	2,083	2,083	2,083
Sound Pressure Level	Cooling / Heating	dB(A)	47 / 50	49 / 52	50 / 52	50 / 52
Sound Power Level		dB(A)	66	69	70	70
Net Weight		kg	100.0	100.0	100.0	100.0
Net Dimensions	WxHxD	mm	940 x 1,420 x 330	940 x 1,420 x 330	940 x 1,420 x 330	940 x 1,420 x 330
Piping Connections						
Total Pipe Length (all lengths combined)		m	85	85	85	85
Max Main Pipe Length	L1+a+b	m	35	35	35	35
Max Individual Pipe Length After Branch	L2, L3, L4, L5	m	15	15	15	15
Max Pipe Length Difference Between Indoor Units	e.g. L2-L3, (a+L3)-(b+L5)	m	5	5	5	5
Max Distance Between Indoor Units	D	m	10	10	10	10
Max Height Between Indoors And Outdoor	h1	m	30	30	30	30
Max Height Difference Between Indoors	h2	m	0.5	0.5	0.5	0.5
Main Pipe (L1+a+b)	Liquid	ø, mm (inch)	9.52 (3/8)	9.52 (3/8)	9.52 (3/8)	9.52 (3/8)
	Gas	ø, mm (inch)	15.88 (5/8)	15.88 (5/8)	15.88 (5/8)	15.88 (5/8)
Individual Liquid Pipe After Branch (L2, L3, L4, L5)	Liquid	ø, mm (inch)	6.35 (1/4)	6.35 (1/4)	9.52 (3/8)	6.35 (1/4)
	Gas	ø, mm (inch)	9.52 (3/8)	12.7 (1/2)	15.88 (5/8)	12.7 (1/2)
Refrigerant*						
Type			R32 (Fluorinated greenhouse gas, GWP=675)			

* Additional refrigerant charge for DPM systems is different than single CAC, please consult the relevant installation manual

Twin DPM



Triple DPM

