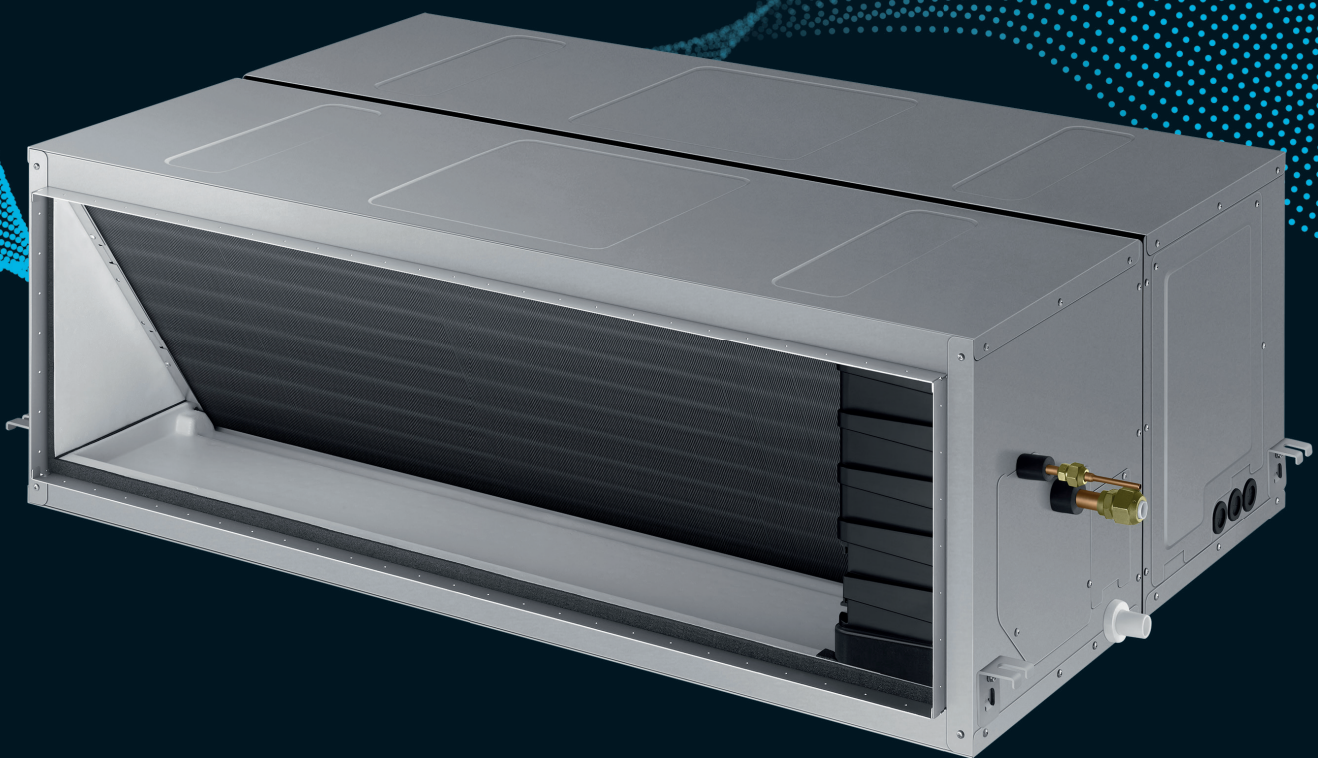


SAMSUNG
Climate Solutions



High Static Large Ducted

High Static Large Ducted

- External static pressure range from 49 to 196 Pa.
- Filter is not included.
- Can be controlled by Smartphone via Wi-Fi Kit (Optional).
- Optional condensation drain pump with 750mm H₂O maximum lifting height and 24 litres/h displacement (available as external assembly).



Specifications

Model		Outdoor Indoor	AC200KXAPH/UE AC200KNHPKH/UE	AC250KXAPH/UE AC250KNHPKH/UE
Electrical				
Power Supply	Outdoor	Φ, #, V, Hz	3Φ, 4, 380–415 V, 50 Hz	3Φ, 4, 380–415 V, 50 Hz
	Indoor	Φ, #, V, Hz	1Φ, 2, 220–240 V, 50 Hz	1Φ, 2, 220–240 V, 50 Hz
MCA ¹	Indoor	A	2.5	2.5
	Outdoor	A	25.0	25.0
MFA	Outdoor	A	31.2	31.2
Minimum SSC value	Outdoor	MVA	2.459	4.139
Interconnecting Communication Cable		mm ²	Screened 0.75-1.5mm ² , 2 Core, F1 F2 Connection	
Performance²				
Nominal Cooling Capacity	Total Cooling (Sensible Cooling)	kW	20.0 (16.2)	25.0 (18.9)
UK Cooling Capacity	Total Cooling (Sensible Cooling)	kW	19.0 (15.5)	23.7 (18.1)
Nominal Heating Capacity		kW	23.0	27.0
Operating Temperature Range	Cooling	°C	-20.0 – 50.0 °C	-20.0 – 50.0 °C
	Heating	°C	-20.0 – 24.0 °C	-20.0 – 24.0 °C
Energy Efficiency³				
Rated Efficiency	EER (Nominal Cooling)	W/W	3.1	2.61
	COP (Nominal Heating)	W/W	3.45	3.24
Seasonal Efficiency	SEER	W/W	5.2	5.0
	SCOP	W/W	3.5	3.4
Air Flow Rate				
Indoor Unit Airflow Rate	H/M/L	l/s	1,200 / 1,000 / 800	1,333 / 1,066 / 850
Indoor Unit Static Pressure	Min/Std/Max	Pa	49.0 / 71.95 / 196.0	49.0 / 71.95 / 196.0
Outdoor Unit Airflow Rate		l/s	3,333.3	3,333.3
Piping Connections				
Liquid Pipe		ø, mm (inch)	9.52 (3/8)	9.52 (3/8)
Gas Pipe		ø, mm (inch)	19.05 (3/4)	22.22 (7/8)
Drain Pipe		ø, mm	VP-25 (OD32, ID25)	VP-25 (OD32, ID25)
Max Piping Length (Height)		m	75 (30)	75 (30)
Refrigerant				
Type			R410A (Fluorinated greenhouse gas, GWP=2088)	
Factory Charging		kg	6.6	6.6
		tCO ₂ e	13.78	13.78
Precharge to		m	30	30
Additional Charge		g/m	50	50
Sound				
Indoor Sound Pressure Level	H/M/L	dB(A)	44 / 40 / 36	47 / 42 / 37
Indoor Sound Power Level		dB(A)	70	72
Outdoor Sound Pressure Level	Cooling / Heating	dB(A)	58 / 60	59 / 61
Outdoor Sound Power Level		dB(A)	75	77
Dimensions				
Net Weight	Indoor Unit/Outdoor Unit	kg	82.5 / 154.0	82.5 / 154.0
Indoor Unit Net Dimensions	W x H x D	mm	1,350 x 450 x 910	1,350 x 450 x 910
Outdoor Unit Net Dimensions	W x H x D	mm	940 x 1,630 x 460	940 x 1,630 x 460

Accessories

Wireless Remote Controller	Touch Wired Controller	Premium Wired Controller	Wi-Fi Kit	Wireless Receiver Kit	External Room Sensor	Drain Pump
AR-EH03E (to be matched with MRK-A10N)	MWR-SH11N	MWR-WG00JN	MIM-H04EN	MRK-A10N (to be matched with AR-EH03E)	MRW-TA	MDP-G075SP (external assembly)

¹ Separate single phase power supply is required for Large Ducted indoor unit

² Performances are based on the following design conditions:
 - Nominal Cooling Capacity: Indoor temperature 27°C DB, 19°C WB, Outdoor temperature 35°C DB
 - Nominal Heating Capacity: Indoor temperature 20°C DB, Outdoor temperature 7°C DB, 6°C WB
 - UK Cooling Capacity: Indoor temperature 23°C DB, 16°C WB, Outdoor temperature 30°C DB

³ For units with capacity greater than 12kW: Efficiencies as shown are according to EU No 2016/2281 (LOT 21) Ecodesign requirements for heat pumps/air conditioners.