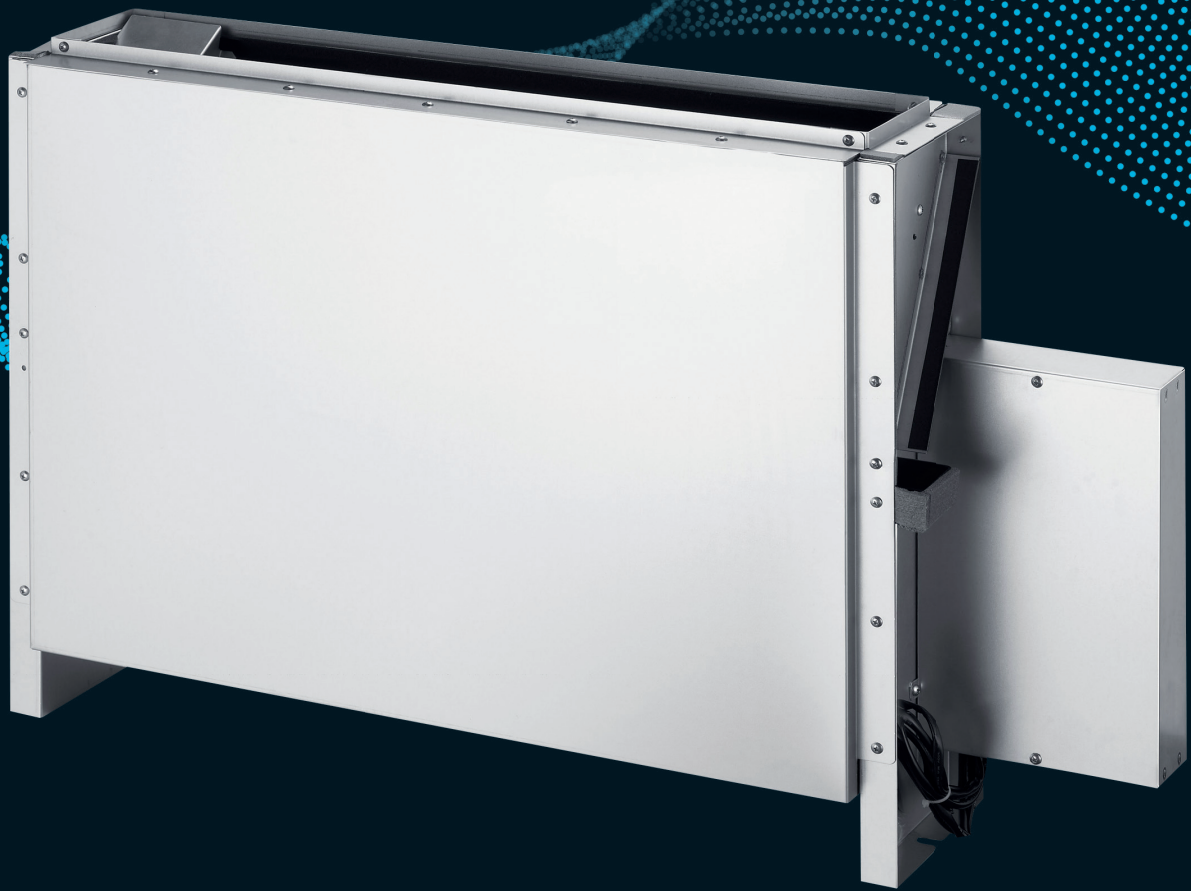


**SAMSUNG**  
Climate Solutions



**High Static Concealed Floor Standing**

# High Static Concealed Floor Standing

- Silent operation.
- Sirocco fan driven by inverter motor.
- Can be controlled by Smartphone via Wi-Fi Kit.

- Long-life washable permanent filter.
- Auto Restart function.

## Specifications



Model			AM036MNFDEH/EU	AM056MNFDEH/EU	AM071MNFDEH/EU
<b>Electrical</b>					
Power Supply	Ø, #, V, Hz		1Ø, 2, 220–240 V, 50 Hz	1Ø, 2, 220–240 V, 50 Hz	1Ø, 2, 220–240 V, 50 Hz
MCA	A		0.7	1.0	1.0
MFA	A		15	15	15
Interconnecting Communication Cable	mm <sup>2</sup>		Screened 0.75-1.5mm <sup>2</sup> , 2 Core, F1 F2 Connection		
<b>Performance<sup>1</sup></b>					
Nominal Cooling Capacity	Total Cooling (Sensible Cooling)	kW	3.6 (2.6)	5.6 (4.2)	71 (5.0)
UK Cooling Capacity	Total Cooling (Sensible Cooling)	kW	2.9 (2.3)	4.6 (3.8)	5.8 (4.6)
Nominal Heating Capacity		kW	4.0	6.3	8.0
<b>Fan</b>					
Type		-	Sirocco Fan	Sirocco Fan	Sirocco Fan
Number of Fans		ea	2	2	2
Fan Motor	Model	-	BLDC	BLDC	BLDC
	Output x n	W	100 x 1	100 x 1	100 x 1
Airflow Rate	H/M/L	m <sup>3</sup> /min	10.0 / 8.5 / 6.0	15.5 / 14.0 / 11.0	15.5 / 14.0 / 11.0
		l/s	167 / 142 / 100	259 / 233 / 183	259 / 233 / 183
Static Pressure	Min/Std/Max	Pa	0 / 29.4 / 58.9	0 / 29.4 / 58.9	0 / 29.4 / 58.9
<b>Piping Connections</b>					
Liquid Pipe		ø, mm (inch)	6.35 (1/4)	6.35 (1/4)	9.52 (3/8)
Gas Pipe		ø, mm (inch)	12.7 (1/2)	12.7 (1/2)	15.88 (5/8)
Drain Pipe		ø, mm	ID 18 HOSE	ID 18 HOSE	ID 18 HOSE
<b>Refrigerant</b>					
Type			R410A (Fluorinated greenhouse gas, GWP=2088)		
Control Method			EEV included	EEV included	EEV included
<b>Sound</b>					
Sound Pressure Level	H/M/L	dB(A)	37 / 32 / 27	40 / 36 / 32	40 / 36 / 32
Sound Power Level	Cooling	dB(A)	53	59	59
<b>Dimensions</b>					
Net Weight		kg	22	27	27
Net Dimensions	W x H x D	mm	945 x 600 x 200	1225 x 600 x 220	1225 x 600 x 220

<sup>1</sup> Performances are based on the following design conditions:

- Nominal Cooling Capacity: Indoor temperature 27°C DB, 19°C WB, Outdoor temperature 35°C DB
- Nominal Heating Capacity: Indoor temperature 20°C DB, Outdoor temperature 7°C DB, 6°C WB
- UK Cooling Capacity: Indoor temperature 23°C DB, 16°C WB, Outdoor temperature 30°C DB

### Accessories

Wireless Remote Controller	Touch Wired Controller	Premium Wired Controller
AR-EH03E (to be matched with MRK-A10N)	MWR-SH11N	MWR-WG00JN
Wireless Receiver Kit	Wi-Fi Kit	External Room Sensor
MRK-A10N (to be matched with AR-EH03E)	MIM-H04EN	MRW-TA