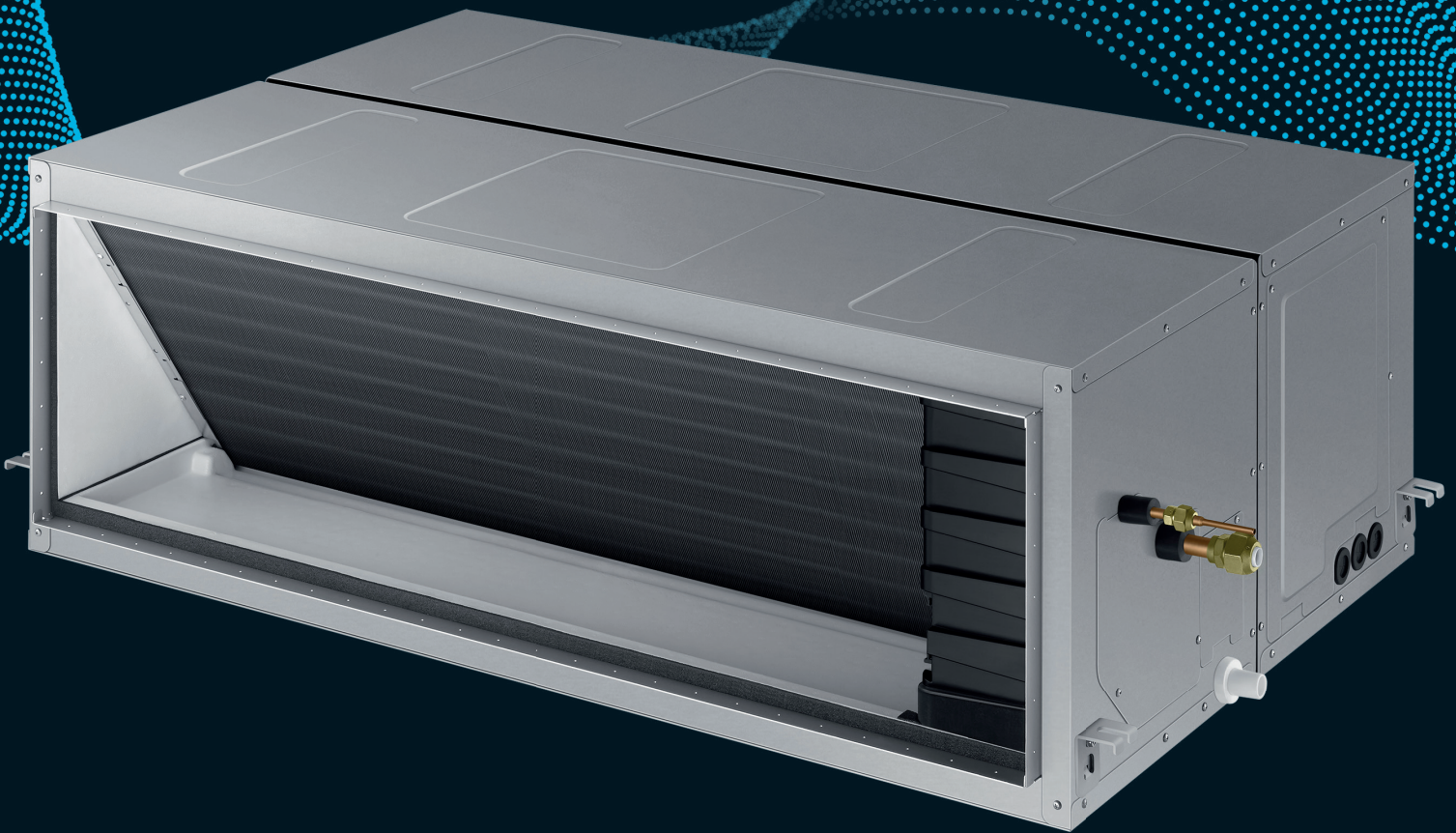


SAMSUNG
Climate Solutions

VRF



High Static Large Ducted

High Static Large Ducted

- Equipped with Sirocco fans direct driven by a single motor.
- Long-life washable HD 40 permanent filter is included (model-specific).
- Auto Restart function.
- Auto ESP setting (model-specific).
- Can be controlled by Smartphone via Wi-Fi Kit (Optional).

Specifications



Model			AM180JNHFKH/EU	AM220FNHDEH/EU	AM280FNHDEH/EU
Electrical					
Power Supply	Ø, #, V, Hz		1Ø, 2, 220–240 V, 50 Hz	1Ø, 2, 220–240 V, 50 Hz	1Ø, 2, 220–240 V, 50 Hz
MCA	A		5.72	5.8	8.64
MFA	A		15	15	15
Interconnecting Communication Cable	mm ²		Screened 0.75–1.5mm ² , 2 Core, F1 F2 Connection		
Performance¹					
Nominal Cooling Capacity	Total Cooling (Sensible Cooling)	kW	18.0 (13.5)	22.4 (17.1)	28.0 (21.8)
UK Cooling Capacity	Total Cooling (Sensible Cooling)	kW	15.0 (12.2)	18.7 (15.4)	23.3 (19.6)
Nominal Heating Capacity		kW	20.0	25.0	31.5
Fan					
Type		-	Sirocco Fan	Sirocco Fan	Sirocco Fan
Number of Fans		ea	2	2	2
Fan Motor	Model	-	BLDC	BLDC	BLDC
	Output x n	W	630 x 1	400 x 1	400 x 1
Airflow Rate	H/M/L	m ³ /min	58 / 50 / 43	58 / 52 / 47	72 / 65 / 58
		l/s	966.67 / 833.33 / 716.67	966.67 / 866.67 / 783.33	1200 / 1083.33 / 966.67
Static Pressure	Min/Std/Max	Pa	49 / 71.93 / 196	49.03 / 147.1 / 245.17	49.03 / 147.1 / 245.17
Piping Connections					
Liquid Pipe		ø, mm (inch)	9.52 (3/8)	9.52 (3/8)	9.52 (3/8)
Gas Pipe		ø, mm (inch)	19.05 (3/4)	19.05 (3/4)	22.22 (7/8)
Drain Pipe		ø, mm	VP25	VP25	VP25
Refrigerant					
Type			R410A (Fluorinated greenhouse gas, GWP=2088)		
Control Method			EEV included	EEV included	EEV included
Sound					
Sound Pressure Level	H/M/L	dB(A)	43 / 39 / 35	45 / 43 / 41	48 / 46 / 43
Sound Power Level	Cooling	dB(A)	80	-	-
Dimensions					
Net Weight		kg	82.5	89.0	89.0
Net Dimensions	W x H x D	mm	1350 x 450 x 910	1240 x 470 x 1040	1240 x 470 x 1040

¹ Performances are based on the following design conditions:

- Nominal Cooling Capacity: Indoor temperature 27°C DB, 19°C WB, Outdoor temperature 35°C DB
- Nominal Heating Capacity: Indoor temperature 20°C DB, Outdoor temperature 7°C DB, 6°C WB
- UK Cooling Capacity: Indoor temperature 23°C DB, 16°C WB, Outdoor temperature 30°C DB

Accessories

Wireless Remote Controller	Touch Wired Controller	Premium Wired Controller	Wireless Receiver Kit	Wi-Fi Kit
AR-EH03E (to be matched with MRK-A10N)	MWR-SH11N	MWR-WG00JN	MRK-A10N (to be matched with AR-EH03E)	MIM-H04EN
External Room Sensor	Drain pump	Drain pump	Drain pump	
MRW-TA	MDP-G075SP (external assembly) for 18kW model	MDP-G075SQ (internal assembly) for 18kW model	MDP-N0475NC1D (internal assembly) for 22 & 28kW models	