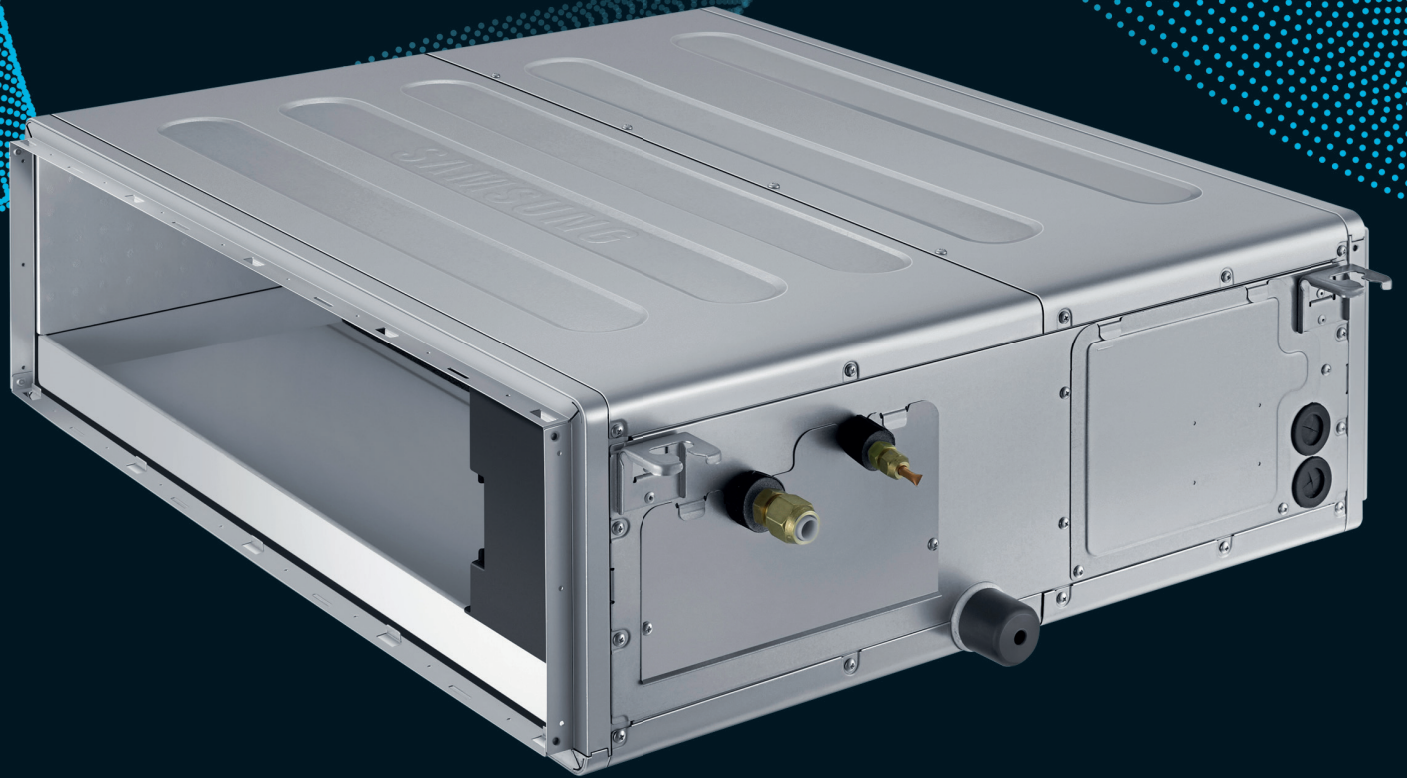


SAMSUNG
Climate Solutions

VRF



Medium Static Ducted With Condensate Pump

Medium Static Ducted With Condensate Pump

- Equipped with Sirocco fans direct driven by a single motor.
- Long-life washable HD 40 permanent filter is included.
- Auto Restart function.

- Automatic ESP setting.
- Built-in condensation drain pump.
- Can be controlled by Smartphone via Wi-Fi Kit (Optional).

Specifications



Model			AM022ANMPKH/EU	AM028ANMPKH/EU	AM036ANMPKH/EU	AM045ANMPKH/EU	AM056ANMPKH/EU
Electrical							
Power Supply		Ø, #, V, Hz	1Ø, 2, 220–240 V, 50 Hz	1Ø, 2, 220–240 V, 50 Hz	1Ø, 2, 220–240 V, 50 Hz	1Ø, 2, 220–240 V, 50 Hz	1Ø, 2, 220–240 V, 50 Hz
MCA		A	0.67	0.67	0.81	0.89	1.08
MFA		A	15	15	15	15	15
Interconnecting Communication Cable		mm ²	Screened 0.75-1.5mm ² , 2 Core, F1 F2 Connection				
Performance¹							
Nominal Cooling Capacity	Total Cooling (Sensible Cooling)	kW	2.2 (1.6)	2.8 (2.0)	3.6 (2.6)	4.5 (3.3)	5.6 (4.2)
UK Cooling Capacity	Total Cooling (Sensible Cooling)	kW	1.8 (1.4)	2.3 (1.8)	2.9 (2.3)	3.7 (3.1)	4.6 (3.8)
Nominal Heating Capacity		kW	2.5	3.2	4.0	5.0	6.3
Fan							
Type		-	Sirocco Fan	Sirocco Fan	Sirocco Fan	Sirocco Fan	Sirocco Fan
Number of Fans		ea	2	2	2	2	2
Fan Motor	Model	-	BLDC	BLDC	BLDC	BLDC	BLDC
	Output x n	W	153 x 1	153 x 1	153 x 1	153 x 1	153 x 1
Airflow Rate	H/M/L	m ³ /min	10.5 / 9 / 7	10.5 / 9 / 7	12 / 9.5 / 7.5	14 / 11 / 8	16 / 13.5 / 9
		l/s	175 / 150 / 117	175 / 150 / 117	208 / 158 / 125	233 / 183 / 133	267 / 225 / 150
Static Pressure	Min/Std/Max	Pa	0 / 24.52 / 147.1	0 / 24.52 / 147.1	0 / 24.52 / 147.1	0 / 29.42 / 147.1	0 / 29.42 / 147.1
Piping Connections							
Liquid Pipe		ø, mm (inch)	6.35 (1/4)	6.35 (1/4)	6.35 (1/4)	6.35 (1/4)	6.35 (1/4)
Gas Pipe		ø, mm (inch)	12.7 (1/2)	12.7 (1/2)	12.7 (1/2)	12.7 (1/2)	12.7 (1/2)
Drain Pipe		ø, mm	VP25	VP25	VP25	VP25	VP25
Refrigerant							
Type		-	R410A (Fluorinated greenhouse gas, GWP=2088)				
Control Method		-	EEV included	EEV included	EEV included	EEV included	EEV included
Sound							
Sound Pressure Level	H/M/L	dB(A)	28 / 26 / 24	28 / 26 / 24	30 / 27 / 24	31 / 28 / 25	32 / 29 / 25
Sound Power Level	Cooling	dB(A)	50	51	53	54	57
Dimensions							
Net Weight		kg	27.9	27.9	27.5	27.5	27.5
Net Dimensions	W x H x D	mm	850 x 250 x 700	850 x 250 x 700	850 x 250 x 700	850 x 250 x 700	850 x 250 x 700
Drain Pump							
Internal Model		-	Drain Pump Included	Drain Pump Included	Drain Pump Included	Drain Pump Included	Drain Pump Included
External Model		-	-	-	-	-	-
Max Lifting Height / Displacement		mm / litres/h	750 / 24	750 / 24	750 / 24	750 / 24	750 / 24

¹ Performances are based on the following design conditions:
 - Nominal Cooling Capacity: Indoor temperature 27°C DB, 19°C WB, Outdoor temperature 35°C DB
 - Nominal Heating Capacity: Indoor temperature 20°C DB, Outdoor temperature 7°C DB, 6°C WB
 - UK Cooling Capacity: Indoor temperature 23°C DB, 16°C WB, Outdoor temperature 30°C DB

Accessories

Wireless Remote Controller	Touch Wired Controller	Premium Wired Controller	Wireless Receiver Kit	Wi-Fi Kit	External Room Sensor
AR-EH03E (to be matched with MRK-A10N)	MWR-SH11N	MWR-WG00JN	MRK-A10N (to be matched with AR-EH03E)	MIM-H04EN	MRW-TA

Specifications



Model			AM071ANMPKH/EU	AM090ANMPKH/EU	AM112ANMPKH/EU	AM128ANMPKH/EU	AM140ANMPKH/EU
Electrical							
Power Supply		Ø, #, V, Hz	1Ø, 2, 220–240 V, 50 Hz	1Ø, 2, 220–240 V, 50 Hz	1Ø, 2, 220–240 V, 50 Hz	1Ø, 2, 220–240 V, 50 Hz	1Ø, 2, 220–240 V, 50 Hz
MCA		A	1.48	1.78	1.97	2.17	2.38
MFA		A	15	15	15	15	15
Interconnecting Communication Cable		mm ²	Screened 0.75-1.5mm ² , 2 Core, F1 F2 Connection				
Performance¹							
Nominal Cooling Capacity	Total Cooling (Sensible Cooling)	kW	7.1 (5.4)	9.0 (7.1)	11.2 (8.6)	12.8 (9.9)	14.0 (10.8)
UK Cooling Capacity	Total Cooling (Sensible Cooling)	kW	5.8 (5.0)	7.3 (6.5)	9.1 (7.7)	10.4 (8.9)	11.4 (9.7)
Nominal Heating Capacity		kW	8.0	10.0	12.5	13.8	16.0
Fan							
Type		-	Sirocco Fan	Sirocco Fan	Sirocco Fan	Sirocco Fan	Sirocco Fan
Number of Fans		ea	2	3	3	3	3
Fan Motor	Model	-	BLDC	BLDC	BLDC	BLDC	BLDC
	Output x n	W	153 x 1	153 x 1	244 x 1	244 x 1	244 x 1
Airflow Rate	H/M/L	m ³ /min	21 / 18 / 13	27 / 22 / 16	30 / 25 / 18	36 / 30 / 23	40 / 34 / 24
		l/s	350 / 300 / 217	450 / 367 / 267	500 / 417 / 300	600 / 500 / 383	667 / 567 / 400
Static Pressure	Min/Std/Max	Pa	0 / 29.42 / 147.1	0 / 39.23 / 147.1	0 / 50.99 / 147.1	0 / 50.99 / 147.1	0 / 50.99 / 147.1
Piping Connections							
Liquid Pipe		ø, mm (inch)	9.52 (3/8)	9.52 (3/8)	9.52 (3/8)	9.52 (3/8)	9.52 (3/8)
Gas Pipe		ø, mm (inch)	15.88 (5/8)	15.88 (5/8)	15.88 (5/8)	15.88 (5/8)	15.88 (5/8)
Drain Pipe		ø, mm	VP25	VP25	VP25	VP25	VP25
Refrigerant							
Type			R410A (Fluorinated greenhouse gas, GWP=2088)				
Control Method			EEV included	EEV included	EEV included	EEV included	EEV included
Sound							
Sound Pressure Level	H/M/L	dB(A)	36 / 32 / 27	37 / 33 / 29	36 / 33 / 30	37 / 34 / 31	39 / 36 / 33
Sound Power Level	Cooling	dB(A)	60	61	61	62	64
Dimensions							
Net Weight		kg	27.5	35	39.5	39.5	39.5
Net Dimensions	W x H x D	mm	850 x 250 x 700	1200 x 250 x 700	1300 x 300 x 700	1300 x 300 x 700	1300 x 300 x 700
Drain Pump							
Internal Model		-	Drain Pump Included	Drain Pump Included	Drain Pump Included	Drain Pump Included	Drain Pump Included
External Model		-	-	-	-	-	-
Max Lifting Height / Displacement		mm / litres/h	750 / 24	750 / 24	750 / 24	750 / 24	750 / 24

¹ Performances are based on the following design conditions:
 - Nominal Cooling Capacity: Indoor temperature 27°C DB, 19°C WB, Outdoor temperature 35°C DB
 - Nominal Heating Capacity: Indoor temperature 20°C DB, Outdoor temperature 7°C DB, 6°C WB
 - UK Cooling Capacity: Indoor temperature 23°C DB, 16°C WB, Outdoor temperature 30°C DB