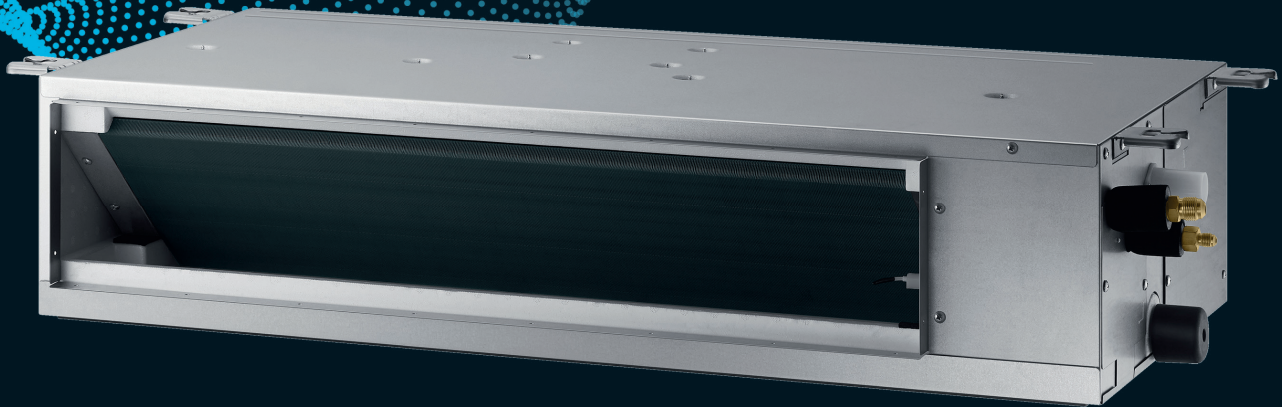


SAMSUNG
Climate Solutions



Slim Ducted

Slim Ducted

- Two-position field adjustable air return, on the bottom or at the rear of the unit.
- Equipped with Sirocco fans direct driven by a single motor.
- Long-life washable HD 40 permanent filter is included.

- Auto Restart function.
- Can be controlled by Smartphone via Wi-Fi Kit (Optional).

Specifications



Model			AM017ANLDKH/EU	AM022ANLDKH/EU	AM028ANLDKH/EU	AM036ANLDKH/EU	AM045ANLDKH/EU	AM056ANLDKH/EU
Electrical								
Power Supply		Ø, #, V, Hz	1Ø, 2, 220–240 V, 50 Hz	1Ø, 2, 220–240 V, 50 Hz	1Ø, 2, 220–240 V, 50 Hz	1Ø, 2, 220–240 V, 50 Hz	1Ø, 2, 220–240 V, 50 Hz	1Ø, 2, 220–240 V, 50 Hz
MCA		A	0.35	0.38	0.45	0.53	0.64	0.92
MFA		A	15	15	15	15	15	15
Interconnecting Communication Cable		mm ²	Screened 0.75-1.5mm ² , 2 Core, F1 F2 Connection					
Performance¹								
Nominal Cooling Capacity	Total Cooling (Sensible Cooling)	kW	1.7 (1.3)	2.2 (1.6)	2.8 (2.0)	3.6 (2.6)	4.5 (3.2)	5.6 (4.2)
UK Cooling Capacity	Total Cooling (Sensible Cooling)	kW	1.4 (1.2)	1.8 (1.4)	2.3 (1.8)	2.9 (2.3)	3.7 (3.0)	4.6 (3.8)
Nominal Heating Capacity		kW	1.9	2.5	3.2	4.0	5.0	6.3
Fan								
Type		-	Sirocco Fan	Sirocco Fan	Sirocco Fan	Sirocco Fan	Sirocco Fan	Sirocco Fan
Number of Fans		ea	2	2	2	2	2	2
Fan Motor	Model	-	BLDC	BLDC	BLDC	BLDC	BLDC	BLDC
	Output x n	W	69 x 1	69 x 1	69 x 1	69 x 1	84 x 1	84 x 1
Airflow Rate	H/M/L	m ³ /min	5.45 / 4.45 / 3.8	6 / 4.9 / 3.8	7.05 / 5.15 / 4.35	8.2 / 6.5 / 4.9	12.5 / 10 / 7.5	15.5 / 12.5 / 9.5
		l/s	91 / 74 / 63	100 / 82 / 63	118 / 86 / 73	137 / 108 / 82	208 / 167 / 125	258 / 208 / 158
Static Pressure	Min/Std/Max	Pa	0 / 9.81 / 29.42	0 / 9.81 / 29.42	0 / 9.81 / 29.42	0 / 9.81 / 29.42	0 / 19.61 / 39.23	0 / 19.61 / 39.23
Piping Connections								
Liquid Pipe		ø, mm (inch)	6.35 (1/4)	6.35 (1/4)	6.35 (1/4)	6.35 (1/4)	6.35 (1/4)	6.35 (1/4)
Gas Pipe		ø, mm (inch)	12.7 (1/2)	12.7 (1/2)	12.7 (1/2)	12.7 (1/2)	12.7 (1/2)	12.7 (1/2)
Drain Pipe		ø, mm	VP25	VP25	VP25	VP25	VP25	VP25
Refrigerant								
Type			R410A (Fluorinated greenhouse gas, GWP=2088)					
Control Method			EEV included	EEV included	EEV included	EEV included	EEV included	EEV included
Sound								
Sound Pressure Level	H/M/L	dB(A)	25 / 22 / 19	26 / 23 / 19	28 / 24 / 19	31 / 26 / 20	32 / 28 / 25	34 / 30 / 26
Sound Power Level	Cooling	dB(A)	40	42	44	46	47	49
Dimensions								
Net Weight		kg	14.9	14.9	14.9	15.3	18.8	18.8
Net Dimensions	W x H x D	mm	700 x 199 x 440	700 x 199 x 440	700 x 199 x 440	700 x 199 x 440	900 x 199 x 440	900 x 199 x 440

¹ Performances are based on the following design conditions:

- Nominal Cooling Capacity: Indoor temperature 27°C DB, 19°C WB, Outdoor temperature 35°C DB
- Nominal Heating Capacity: Indoor temperature 20°C DB, Outdoor temperature 7°C DB, 6°C WB
- UK Cooling Capacity: Indoor temperature 23°C DB, 16°C WB, Outdoor temperature 30°C DB

Accessories

Wireless Remote Controller	Touch Wired Controller	Premium Wired Controller	Wireless Receiver Kit
AR-EH03E (to be matched with MRK-A10N)	MWR-SH11N	MWR-WG00JN	MRK-A10N (to be matched with AR-EH03E)
Wi-Fi Kit	External Room Sensor	Drain pump	Drain pump
MIM-H04EN	MRW-TA	MDP-Z075SZED (for 1.7, 2.2, 2.8, 3.6, 4.5, 5.6, & 7.1kW model)	MDP-E075SEE3D (for 9.0, 11.2, 12.8 & 14.0kW model)

Specifications



Model			AM071ANLDKH/EU	AM090ANLDKH/EU	AM112ANLDKH/EU	AM128ANLDKH/EU	AM140ANLDKH/EU
Electrical							
Power Supply		Ø, #, V, Hz	1Ø, 2, 220–240 V, 50 Hz	1Ø, 2, 220–240 V, 50 Hz	1Ø, 2, 220–240 V, 50 Hz	1Ø, 2, 220–240 V, 50 Hz	1Ø, 2, 220–240 V, 50 Hz
MCA		A	1.04	1.38	1.38	1.75	1.92
MFA		A	15	15	15	15	15
Interconnecting Communication Cable		mm ²	Screened 0.75-1.5mm ² , 2 Core, F1 F2 Connection				
Performance¹							
Nominal Cooling Capacity	Total Cooling (Sensible Cooling)	kW	7.1 (5.4)	9.0 (7.1)	11.2 (8.6)	12.8 (9.9)	14.0 (10.8)
UK Cooling Capacity	Total Cooling (Sensible Cooling)	kW	5.8 (5.0)	7.3 (6.5)	9.1 (7.7)	10.4 (8.9)	11.4 (9.7)
Nominal Heating Capacity		kW	8.0	10.0	12.5	13.8	16.0
Fan							
Type		-	Sirocco Fan	Sirocco Fan	Sirocco Fan	Sirocco Fan	Sirocco Fan
Number of Fans		ea	3	3	3	3	3
Fan Motor	Model	-	BLDC	BLDC	BLDC	BLDC	BLDC
	Output x n	W	84 x 1	183 x 1	183 x 1	183 x 1	183 x 1
Airflow Rate	H/M/L	m ³ /min	18 / 14.5 / 11	29 / 27 / 25	31 / 29 / 27	34 / 32 / 30	36 / 34 / 32
		l/s	300 / 242 / 183	483 / 450 / 417	520 / 483 / 450	567 / 533 / 500	600 / 567 / 533
Static Pressure	Min/Std/Max	Pa	0 / 19.61 / 39.23	0 / 29.42 / 58.84	0 / 29.42 / 58.84	0 / 29.42 / 58.84	0 / 29.42 / 58.84
Piping Connections							
Liquid Pipe		ø, mm (inch)	9.52 (3/8)	9.52 (3/8)	9.52 (3/8)	9.52 (3/8)	9.52 (3/8)
Gas Pipe		ø, mm (inch)	15.88 (5/8)	15.88 (5/8)	15.88 (5/8)	15.88 (5/8)	15.88 (5/8)
Drain Pipe		ø, mm	VP25	VP25	VP25	VP25	VP25
Refrigerant							
Type			R410A (Fluorinated greenhouse gas, GWP=2088)				
Control Method			EEV included	EEV included	EEV included	EEV included	EEV included
Sound							
Sound Pressure Level	H/M/L	dB(A)	34 / 30 / 27	37 / 36 / 34	37 / 36 / 34	37 / 36 / 34	39 / 38 / 36
Sound Power Level	Cooling	dB(A)	49	66	66	66	68
Dimensions							
Net Weight		kg	22	40	40	41.5	41.5
Net Dimensions	W x H x D	mm	1100 x 199 x 440	1300 x 295 x 690	1300 x 295 x 690	1300 x 295 x 690	1300 x 295 x 690

¹ Performances are based on the following design conditions:
 - Nominal Cooling Capacity: Indoor temperature 27°C DB, 19°C WB, Outdoor temperature 35°C DB
 - Nominal Heating Capacity: Indoor temperature 20°C DB, Outdoor temperature 7°C DB, 6°C WB
 - UK Cooling Capacity: Indoor temperature 23°C DB, 16°C WB, Outdoor temperature 30°C DB