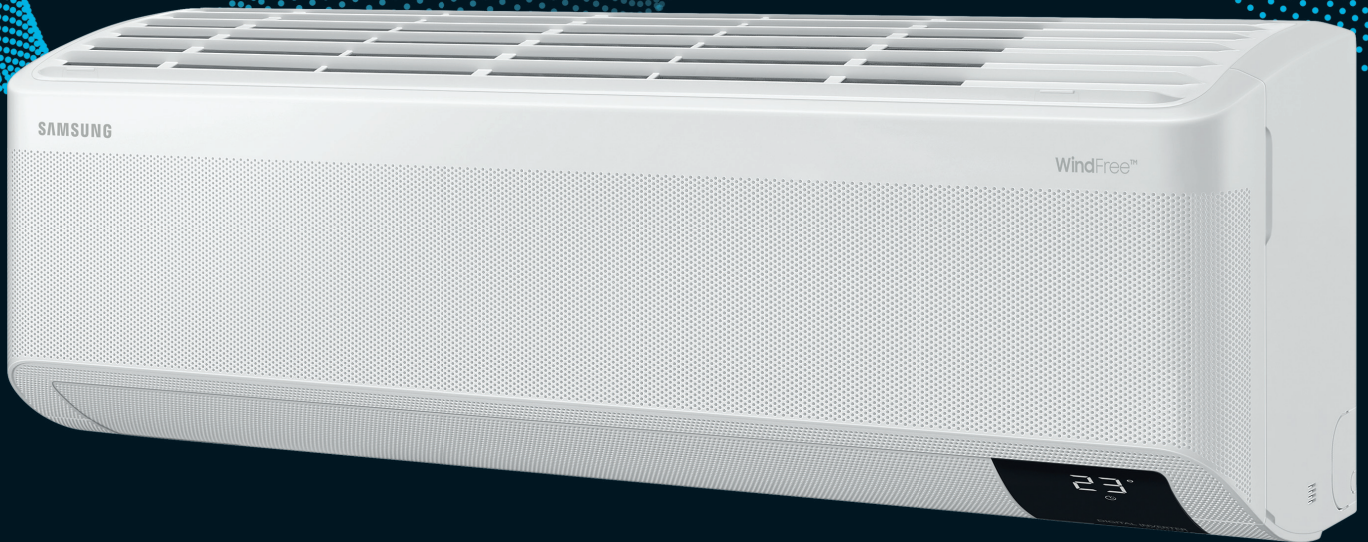


**SAMSUNG**  
Climate Solutions

VRF



**WindFree™ Wall Mounted without EEV**

# WindFree™ Wall Mounted without EEV

- WindFree™ Cooling mode.
- Four-way swing allows users to control the airflow direction from left to right and up or down using the remote controller.
- Can be controlled by Smartphone via Wi-Fi Kit (Optional).
- Equipped with Easy Filter Plus, easily accessible and washable pre-filter with dense mesh.

## Specifications



Model			AM015TNADKH/EU	AM022TNADKH/EU	AM028TNADKH/EU	AM036TNADKH/EU
<b>Electrical</b>						
Power Supply	Ø, #, V, Hz		1Ø, 2, 220–240 V, 50 Hz	1Ø, 2, 220–240 V, 50 Hz	1Ø, 2, 220–240 V, 50 Hz	1Ø, 2, 220–240 V, 50 Hz
MCA	A		0.16	0.20	0.25	0.31
MFA	A		15.0	15.0	15.0	15.0
Interconnecting Communication Cable	mm <sup>2</sup>		Screened 0.75-1.5mm <sup>2</sup> , 2 Core, F1 F2 Connection			
<b>Performance<sup>1</sup></b>						
Nominal Cooling Capacity	Total Cooling (Sensible Cooling)	kW	1.5 (1.0)	2.2 (1.5)	2.8 (1.9)	3.6 (2.4)
UK Cooling Capacity	Total Cooling (Sensible Cooling)	kW	1.2 (1.0)	1.8 (1.5)	2.3 (1.8)	2.9 (2.2)
Nominal Heating Capacity		kW	1.7	2.5	3.2	4.0
<b>Fan</b>						
Type		-	Crossflow Fan	Crossflow Fan	Crossflow Fan	Crossflow Fan
Number of Fans		ea	1	1	1	1
Fan Motor	Model	-	BLDC	BLDC	BLDC	BLDC
	Output x n	W	27 x 1	27 x 1	27 x 1	27 x 1
Airflow Rate	H/M/L	m <sup>3</sup> /min	4.9 / 4.5 / 4.1	5.7 / 5.0 / 4.5	8.5 / 7.7 / 6.9	10.3 / 9.1 / 8.3
		l/s	81.7 / 75.0 / 68.3	95.0 / 83.3 / 75.0	141.7 / 128.3 / 115.0	171.7 / 151.7 / 138.3
<b>Piping Connections</b>						
Liquid Pipe	ø, mm (inch)		6.35 (1/4)	6.35 (1/4)	6.35 (1/4)	6.35 (1/4)
Gas Pipe	ø, mm (inch)		12.7 (1/2)	12.7 (1/2)	12.7 (1/2)	12.7 (1/2)
Drain Pipe	ø, mm		ID 18 HOSE	ID 18 HOSE	ID 18 HOSE	ID 18 HOSE
<b>Refrigerant</b>						
Type			R410A (Fluorinated greenhouse gas, GWP=2088)			
Control Method			EEV not included	EEV not included	EEV not included	EEV not included
<b>Sound</b>						
Sound Pressure Level	H/M/L/WindFree™	dB(A)	31 / 30 / 27 / 26	34 / 32 / 30 / 27	34 / 33 / 32 / 26	40 / 36 / 34 / 26
Sound Power Level	Cooling	dB(A)	50	51	52	56
<b>Dimensions</b>						
Net Weight		kg	9.0	9.0	9.5	9.5
Net Dimensions	W x H x D	mm	820 x 299 x 215	820 x 299 x 215	820 x 299 x 215	820 x 299 x 215

<sup>1</sup> Performances are based on the following design conditions:

- Nominal Cooling Capacity: Indoor temperature 27°C DB, 19°C WB, Outdoor temperature 35°C DB
- Nominal Heating Capacity: Indoor temperature 20°C DB, Outdoor temperature 7°C DB, 6°C WB
- UK Cooling Capacity: Indoor temperature 23°C DB, 16°C WB, Outdoor temperature 30°C DB

### Accessories

Wireless Remote Controller	Touch Wired Controller	Premium Wired Controller	Wi-Fi Kit
AR-EH03E	MWR-SH11N	MWR-WG00JN	MIM-H04EN
External Room Sensor	EEV Kit 1 x Indoors	EEV Kit 2x Indoors	EEV Kit 3x Indoors
MRW-TA	MEV-E24SA MEV-E32SA	MXD-E24K132A MXD-E24K200A MXD-E32K200A	MXD-E24K232A MXD-E24K300A MXD-E32K224A MXD-E32K300A

# Specifications



Model			AM045TNADKH/EU	AM056TNADKH/EU	AM07TNADKH/EU	AM082TNADKH/EU
<b>Electrical</b>						
Power Supply		Ø, #, V, Hz	1Ø, 2, 220–240 V, 50 Hz	1Ø, 2, 220–240 V, 50 Hz	1Ø, 2, 220–240 V, 50 Hz	
MCA		A	0.34	0.44	0.50	0.54
MFA		A	15.0	15.0	15.0	15.0
Interconnecting Communication Cable		mm <sup>2</sup>	Screened 0.75-1.5mm <sup>2</sup> , 2 Core, F1 F2 Connection			
<b>Performance<sup>1</sup></b>						
Nominal Cooling Capacity	Total Cooling (Sensible Cooling)	kW	4.5 (3.1)	5.6 (3.8)	6.8 (4.6)	8.2 (5.6)
UK Cooling Capacity	Total Cooling (Sensible Cooling)	kW	3.7 (2.8)	4.6 (3.4)	5.4 (4.6)	6.7 (5.0)
Nominal Heating Capacity		kW	5.0	6.3	7.0	8.5
<b>Fan</b>						
Type		-	Crossflow Fan	Crossflow Fan	Crossflow Fan	Crossflow Fan
Number of Fans		ea	1	1	1	1
Fan Motor	Model	-	BLDC	BLDC	BLDC	BLDC
	Output x n	W	27 x 1	27 x 1	27 x 1	27 x 1
Airflow Rate	H/M/L	m <sup>3</sup> /min	12.5 / 11.4 / 10.5	15.7 / 13.8 / 12.0	16.8 / 15.0 / 13.2	17.5 / 15.6 / 13.8
		l/s	208.3 / 190.0 / 175.0	261.7 / 230.0 / 200.0	280.0 / 250.0 / 220.0	291.7 / 260.0 / 230.0
<b>Piping Connections</b>						
Liquid Pipe		ø, mm (inch)	6.35 (1/4)	6.35 (1/4)	9.52 (3/8)	9.52 (3/8)
Gas Pipe		ø, mm (inch)	12.7 (1/2)	12.7 (1/2)	15.88 (5/8)	15.88 (5/8)
Drain Pipe		ø, mm	ID 18 HOSE	ID 18 HOSE	ID 18 HOSE	ID 18 HOSE
<b>Refrigerant</b>						
Type			R410A (Fluorinated greenhouse gas, GWP=2088)			
Control Method			EEV not included	EEV not included	EEV not included	EEV not included
<b>Sound</b>						
Sound Pressure Level	H/M/L/WindFree™	dB(A)	37 / 34 / 33 / 29	40 / 37 / 34 / 29	43 / 40 / 37 / 29	46 / 45 / 43 / 30
Sound Power Level	Cooling	dB(A)	55	58	62	64
<b>Dimensions</b>						
Net Weight		kg	12.0	12.0	12.0	13.0
Net Dimensions	W x H x D	mm	1055 x 299 x 215	1055 x 299 x 215	1055 x 299 x 215	1055 x 299 x 215

<sup>1</sup> Performances are based on the following design conditions:

- Nominal Cooling Capacity: Indoor temperature 27°C DB, 19°C WB, Outdoor temperature 35°C DB
- Nominal Heating Capacity: Indoor temperature 20°C DB, Outdoor temperature 7°C DB, 6°C WB
- UK Cooling Capacity: Indoor temperature 23°C DB, 16°C WB, Outdoor temperature 30°C DB